



# IMPACT REPORT

Advancing world-class health care and healthier communities today, and for generations to come. Together we've enabled a year of transformation, uniting community strength with a vision for a New Era in regional health care. As we pen this chapter, remember: your generosity is the heartbeat of our success. With gratitude, we celebrate your pivotal role in reshaping care for all who call the southern interior home.

GIVING CHANGES EVERYTHING

# CONTENT

- 01. MESSAGE FROM THE CHAIR
- 02. IMPACT: WORLD-CLASS STROKE CARE, RIGHT HERE AT KGH
- 04. STORY: INSIDE THE PRITCHARD SIMULATION CENTRE AT KGH
- 06. STORY: STICKING TOGETHER
- 08. UPDATE: IT TAKES A VILLAGE
- 10. PROFILE: THE INNKEEPER'S GALA – A REMARKABLE LEGACY
- 11. SPECIAL EVENTS AND FUNDRAISERS
- 12. STORY: MAKING LEMONADE
- 14. MEMORIAL GIVING
- 15. ORGANIZATIONAL GIVING
- 16. INDIVIDUAL GIVING
- 18. STORY: IMMEASURABLE TREASURES – THE IMPACT OF TIME & TALENT
- 20. ENDOWMENT FUNDS & ESTATE GIVING
- 21. LEGACY GIVING
- 22. FINANCIAL INFORMATION
- 23. BOARD OF DIRECTORS
- 24. IMPACT: PROJECT GRANT HIGHLIGHTS

We humbly recognize and acknowledge that the KGH Foundation operates on the traditional, ancestral and unceded territory of the syilx people.

Cover Photo: TBD

A MESSAGE FROM THE CHAIR

## TOGETHER, WE CAN DO SO MUCH.

“When you do nothing you feel overwhelmed and powerless. But when you get involved, you feel the sense of hope and accomplishment that comes from knowing you are working to make things better.”

~Maya Angelou



On behalf of the KGH Foundation Board of Directors, it is my honour to share this Impact Report with you. It's important for you to know the significance of the difference that your generosity is making. Being engaged in your community in this way is the catalyst for hope and accomplishment that absolutely drives us forward. Though the challenges we face in health care are complex, they are not overwhelming if we work together. And here, in the interior, as you've shown, we are not powerless.

Collectively, in the 2022/ 23 fiscal year, you donated over \$14.6 million to advance health care where it absolutely matters most – right here, in our home community.

What is awesome is that more and more, you are choosing to actively engage, taking part in community fundraisers and events that bring us together and connect us to causes that we all care about. Mental health, brain health, cardiac care, pediatrics... these are just some of the areas of health care at Kelowna General Hospital and in our community that will receive help from your participation in events and fundraisers for the KGH Foundation. From the Heart of Gold Gala to Homebase, Dream Rally, Stride and Glide, and the ever-popular Bands, BBQ, Beers, and Balding festivities (and so many more!), all together, community fundraising events raised over \$3.3 million!

I'm also happy to report that our efforts in the past decade to make giving more accessible to everyone who wants to make a difference have translated into an over 430% increase in online giving. In fact, 37% of you chose to give a gift online this year! With the ease of a click, from the comfort of your homes, and the convenience of your phones, this past year, nearly \$560,000 was donated online.

In the Impact Report that follows, I hope you enjoy learning just how your gifts this year have enabled medical excellence, collaboration, and a fundamental commitment to supporting the people that deliver health care, and the patients that benefit, right here at home.

As Board Chair, husband of a KGH physician, a dad and a proud citizen in this community, I am grateful to everyone who has given to the KGH Foundation over the past year. Thank you for getting involved. As Helen Keller famously said, “Alone we can do so little; together we can do so much.”

**Kyle Recsky**

Chair, KGH Foundation Board of Directors

EVERY MOMENT MATTERS - STROKE CAMPAIGN UPDATE

# WORLD-CLASS STROKE CARE, RIGHT HERE AT KGH

In March 2021, the KGH Foundation launched Every Moment Matters. The campaign aimed to support comprehensive advancements in stroke care at KGH and for stroke patients across the southern interior of B.C. The call to action inspired the community and donors took swift action. In less than seven months, the campaign reached its ambitious goal of \$8 million.

A significant commitment of the funding was to bring Endovascular Thrombectomy, a highly specialized, minimally invasive interventional procedure to remove blood clots from the large vessels of the brain, at KGH. The capacity for EVT was formerly only available in large urban centres like Vancouver, Calgary and Toronto. EVT is being heralded as a game-changer in medical teams' ability to respond to stroke. It can mean the difference between a lifetime of disability or being able to walk away from the procedure almost as if the stroke never happened. Such was the case for Donna Van Velzen.

On a chilly November morning, Donna, a Registered Nurse at KGH for over 30 years, arrived for an early shift. As she put on her shoes in the staff changing room, she discovered that she couldn't move her right leg and began teetering to the right. She remembers thinking, "No, no, no..." because it occurred to her that she might be having a stroke.

Most strokes are caused by a blockage or clot in a blood vessel in the brain, also known as ischemic stroke. When blood flow to the brain is blocked, brain cells begin to die – up to 2 million every minute.

Donna surfed the walls and managed to reach

her work area to access help. A team was immediately brought over to assess her. "I heard the neurologist say that I had a blood clot in my brain," says Donna. "Then he said they were going to try and remove it. I remember thinking, are they going to have to open up my brain?"

In fact, KGH physicians didn't need to open up Donna's brain. Instead, after a CT scan that confirmed the clot, Donna was prepped for EVT.

By 10 am, the procedure was complete, and Donna was in ICU (Intensive Care Unit) recovering. She went home the next evening.

"Before EVT, surviving a stroke often meant losing the ability to speak, write or perform activities of daily living, being placed in a care home and/or coping with the emotional toll through rehabilitation," says Dr. Paul Kurkjian, Interventional Radiology Stroke Lead at KGH, who performed the procedure for Donna that fateful day. "However, thanks to EVT, patients like Donna who suffer from an ischemic stroke can receive this revolutionary treatment right here at KGH. The results can be astounding—with some patients able to walk out of the hospital within two or three days."

"EVT and the specialized team at KGH saved my life," says Donna. "The outcome could have been quite different for me if it hadn't been for them. I am so grateful – to the hospital teams and to the donors who made EVT possible, right here, close to home."

Beyond providing better care for patients closer to home, the innovation and equipment are recruitment tools for the hospital and bring

more talent and expertise to our community.

"We've gone from no endovascular capability in this regard, to doing over 150 cases (in 2022), to recruiting a neurosurgical interventionalist sooner than we ever thought possible," explains Dr. Aleksander Tkach, Medical Director of the IH (Interior Health) Stroke Network and EVT Service.

"We've been able to hire two more stroke doctors and we're involved in multiple trials throughout the nation," continues Dr. Tkach. "In fact, our trial recruitment throughout the pandemic was actually some of the best in Canada – going from zero to this so quickly because of this attitude of recognizing the innovation and the strength and resources already within the community."

"The fact that our donors helped bring the talent and the equipment to KGH is incredible," states Allison (Allie) Young, KGH Foundation CEO. "Patients in the southern interior of B.C. no longer need to travel to Vancouver or Calgary to access EVT. Now, people in our communities are not only surviving a stroke but, like Donna, can continue to thrive after recovery."

"This investment in innovation, technology and people is imperative as we continue to drive world-class health care forward and ensure that it is available, close to home," says Allie.

The commitment to EVT also included the resources needed to outfit a brand-new, dedicated suite for the newly acquired EVT equipment. This summer, the suite became operational.



EVT Suite at KGH



Donna Van Velzen  
KGH Nurse, EVT Patient



Marshall Eliuk, who helped complete the campaign with a \$1M gift, cut the red ribbon to officially open the EVT suite at KGH.

## ADVANCEMENTS IN EMERGENCY CARE

# HIGH TECH & HANDS ON

## INSIDE THE PRITCHARD SIMULATION CENTRE AT KGH

Advancements in medical technology can truly revolutionize acute care. However, implementing and integrating these innovative technologies into busy medical settings can be challenging, especially for equipment intended for use in high-pressure emergency situations.

This is why the Pritchard Simulation Centre at Kelowna General Hospital (KGH) is so incredibly valuable. In 2012, the Colin and Lois Pritchard Foundation gave a generous gift to fund the Centre, which bears their name. The Centre is a dedicated space where KGH practitioners and medical learners can train and practice their skills in advanced life support techniques and the use of innovative medical devices.

This past year, a significant estate gift to the KGH Foundation added three life-saving pieces of training equipment to the Centre. Now, KGH critical care and emergency practitioners can keep their skills sharp by undergoing simulation-based training on these new devices.

Two of the devices work in tandem, the Lifepak 15 defibrillator and the LUCAS Chest Compression System. “The Lifepak 15 is an important addition to the Simulation Centre because it is the machine used throughout Interior Health and correct use saves lives,” explains JoAnne Slinn, RN, and Regional Knowledge Coordinator for the Simulation Centre. “Previously we only had an older defibrillator to use for staff training, so when they got into the field, they had to adjust to the differences with the Lifepak 15, which could be problematic in a time-sensitive situation.”

The LUCAS Chest Compression System is an

automatic compression system that provides high-quality CPR for patients in cardiac arrest.

Dr. Neil Long, Emergency Physician at KGH speaks passionately about the impact of the LUCAS device, “Before, you could have a patient in a cardiac arrest, and you would need a queue of five nurses to do CPR. The LUCAS device can take over for that. When it is in position, it gives accurate CPR at the right rate, does the pauses at exactly the right time and frees up the staff to do other vital tasks once the device is on the patient.”

Dr. Long continues, “In a chaotic emergency situation, the LUCAS device helps buy us the critical time to think so that we can determine what the root cause of the patient’s cardiac arrest is and more quickly establish our next steps.”

### CLEARING THE AIR(WAY)

Sometimes there is a challenge with passing a tube into the airway during the skill of intubation. In these situations, a thin tube with a camera at the end called a bronchoscope can be used. During the procedure, the bronchoscope and breathing tube are passed through the nose or mouth, down the throat and into the lungs to assist patients who are experiencing difficulties breathing on their own. This is a time-sensitive procedure that can lead to significant medical distress if there are delays.

A specialist bronchoscopy trainer simulates this delicate and life-saving procedure with fibre optic technology. The acquisition of this novel piece of equipment for the Simulation Centre allows physicians and medical trainees

to safely practice and fine-tune these skills with no risk to patients.

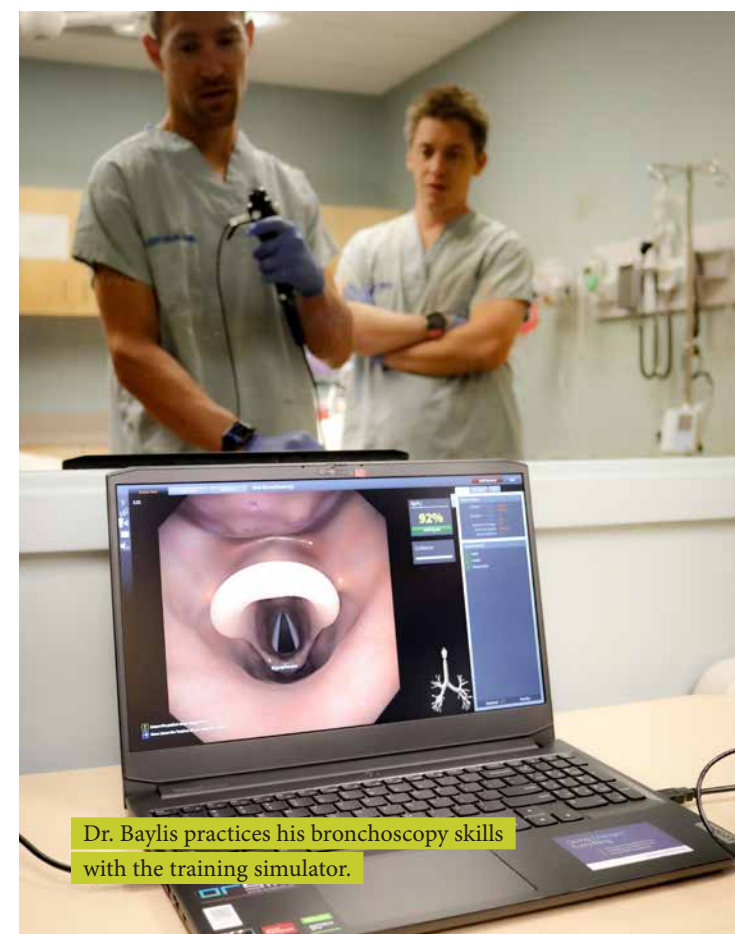
“The replica video bronchoscope is connected to a desktop sensor,” explains Dr. Jared Baylis, Simulation Medical Director, and Emergency Physician at KGH. “The sensor registers the movement of the insertion tube and translates this into a three-dimensional virtual airway displayed on the screen. It allows for virtual practice, meaning we do not require an actual patient or manikin, and provides instant feedback results.”

The benefits of the Pritchard Simulation Centre environment and the new equipment have an impact beyond KGH. The Centre has used the training devices during the inaugural UBC Emergency Resident procedure day, where over 50 emergency specialist physicians in training were able to practice various life-saving procedures using the LifePak 15, LUCAS device, and bronchoscopy trainer in simulation settings. “The benefits of these training tools are immeasurable,” says Dr. Baylis. “We are able to develop and enhance the skills and “muscle memory” of all our emergency specialists, whether current or future practitioners.”

The estate gift is one of several to the KGH Foundation, pushing the boundaries of medical excellence, and making a real difference in the lives of patients and their families, close to home. Dr. Long sums it up perfectly, “Donor support of innovative medical technologies that facilitate excellence in health care delivery is vital. These devices save lives. We are incredibly grateful for what philanthropy makes possible here at KGH.”



Dr. Jared Baylis, Dr. Neil Long and JoAnne Slinn in the Pritchard Simulation Centre with the LUCAS device.



Dr. Baylis practices his bronchoscopy skills with the training simulator.



The Lifepak 15 defibrillator.

## SCIENCE &amp; INNOVATION

# STICKING TOGETHER

A new technology that could be a game changer in infection control is now being tested right here at Kelowna General Hospital, thanks to an innovative partnership and the support of KGH Foundation donors.

“The simplest way to describe it is it’s similar to a fly strip that you’d see hanging in a garage,” explains Dr. Deanne (Dee) Taylor, Interior Health’s Corporate Director of Research. “But in this case, it attracts the flies (viruses and bacteria), and they subsequently stick to it. The result is the mitigation of the spread of viruses and bacteria that may cause illness for people.”

C-POLAR Technologies is a global company headquartered in the US with a research and development centre in Canada. The innovative technology they have been developing has a particular charge on it that attracts viruses and bacteria and has been verified by leading third-party academic laboratories globally.

“It’s a remarkable technology with huge potential impact,” says Dr. Taylor.

C-POLAR (short for cationic polarization) has a variety of uses, from ventilation and personal protective equipment to room furnishings and medical equipment. It has been examined by the UBC Okanagan’s Airborne-Disease-Transmission Research Cluster and approved by the World Health Organization and put into practice in hospitals all around the world. The result is a more secure atmosphere for both patients and front-line staff.

Not only is the technology novel, but the partnership that’s bringing it to life is remarkably unique.

Dr. Taylor explains, “We were in the throes of the pandemic when I received a call from Dr. Alan Rabinowitz, a Cardiologist at St. Paul’s Hospital in Vancouver. He shared the concept of C-POLAR. We immediately recognized the incredible opportunity for collaboration and got to work.”

Calling on partners at UBC Okanagan, who had already been working on airborne disease transmission, Drs. Taylor and Rabinowitz submitted a grant application to the KGH Foundation to test the technology in a local hospital setting. Utilizing the initial KGH Foundation grant, Dr. Taylor spearheaded a public-private partnership with C-POLAR.

“We considered what would work best for patient care,” shares Dr. Taylor. “Something that wouldn’t take up space and something that wouldn’t make noise was ideal. Since C-POLAR can be applied to unconventional materials, our team came up with the unique concept of using it on artwork in the hospital. The C-POLAR charged art, which is positively charged, will attract the negatively charged airborne viruses and bacteria and mitigate the actual bacterial and viral count in that particular area by upwards of 90 percent.”

“In a hospital setting, this kind of innovation is truly a game-changer, dramatically reducing airborne bacteria and virus particles in environments, like hospitals, where people are sick and vulnerable,” says Allison Young, CEO of the KGH Foundation. “Wrapping the

technology with beautiful artwork is really going the extra mile – the kind of ingenuity that needs to be supported in our health system.”

“Talk about performing double duty!”

Buoyed by the promising early results, Dr. Taylor applied for and has now been approved for added funding through the BC Ministry of Health. As is increasingly the case, donor funding for projects like C-POLAR can be the catalyst for unlocking provincial funding. This is one of the first projects to receive funding through the ministry’s Innovation Pathway Program, which aims to support the testing and assessment of promising innovations in health system settings.

“We know that we can accomplish incredible things when we work together,” states Allison. “Partnerships like this, where non-profit, government and the private sector come together to drive innovation towards a common goal are an important investment in the long-term success of our health care systems.”

The final word though, comes from Dr. Taylor. “We are grateful to the donors who have made this collaborative initiative possible. It very much embodies the kind of innovation and partnerships that the KGH Foundation promises through its ‘Closer to home than you think’ fundraising campaign. It is innovations such as this that will drive health care forward, right here at home... and beyond.”



Photo caption goes here

ADVANCING LOCAL MENTAL HEALTH CARE

# IT TAKES A VILLAGE

The urgent need to address the mental health care in our communities continues to dominate the conversation. However, the generosity of donors to the We see you campaign is catalyzing more than just talk. By re-sourcing both immediate needs and committing funding to 'buy time' for mental health care professionals across the continuum to re-imagine the system of care, the impact of the \$1.7 million campaign is already visible.

The We see you campaign launched on March 10, 2022. It has been a game-changer in providing much-needed funding for local mental health care programs and resources. The unique collaboration initiated by the KGH Foundation, CMHA Kelowna, Child Advocacy Centre Kelowna (CAC), Kelowna Community Resources, and Interior Health has paved the way for innovative solutions in supporting our mental health care system.

## INCREASING CAPACITY AT CHILD ADVOCACY CENTRE (CAC) KELOWNA

Ginny Becker, Executive Director of CAC Kelowna, attests to the campaign's critical timing. "With CAC having two and a half years of service delivery behind us, we had significant and compelling evidence of the challenges and barriers families faced in accessing mental health services following an experience of child abuse."

Thanks to the funding from We see you, the CAC has been able to expand its caregiver support groups, providing vital psychoeducational support, tools, and resources to help children affected by trauma. The CAC hired Dr. Pia Pechtel, a clinical psychologist, as a key member of the team, to help lead the

evolution of the CAC programming and increase the capacity to serve vulnerable young members of the community.

## ADVANCING FAMILY SERVICES AT FOUNDRY

At Foundry, part of CMHA Kelowna Family Services, We see you funding made it possible to hire a Family Peer Supporter, someone who uses their lived experience to empower and inform parents as they navigate mental health care for their young ones. The program has already guided 380 caregivers through 1,140 sessions in 2022. Demand for support continues to grow, highlighting the ongoing need for this kind of support.

## A SAFE SPACE FOR EVERYONE

We see you also supported a pilot project with This Space Belongs to You (This Space) in Kelowna. Meaghan Duckett, This Space Founder and Counsellor, is seeing the impact of that funding on her clients. "Accessing any form of social service support, including mental health care services, is a scary and dangerous place for queer and Indigenous, Black, and People of Colour (IBPOC) people," she explains. "With the funding from the KGH Foundation, we were able to support over 82 individual youth through 450 sessions of one-to-one mental health counseling, free of charge."

With an average of 34 referrals per month and growing, This Space is indeed an essential 'space' for young members of our community.

"This Space is an invaluable refuge for young people in our community who struggle

to find safe, affirming services that understand their unique experiences, says Meaghan. "Sixty-two percent of our clients are not aware of any other 2SLGBTQIA+ (Two-Spirit people, Lesbian, Gay, Bisexual, Transgender, Queer, Intersex, Asexual) and/or IBPOC-specific services in the Central Okanagan," states Meaghan.

## COLLECTIVE IMPACT

"Through your generosity, we are fostering a collective impact on our community's mental health crisis," states Allison (Allie) Young, CEO of the KGH Foundation. "Through the Mental Health Collective Impact Fund established as part of the We see you campaign, we have worked with leaders in the community to understand the main elements required of a mental health and substance use system of care and identify barriers to working as a system. Our next steps are to prioritize funding and determine where the foundation can best support and facilitate positive change."

Ginny emphasizes that it takes the entire community to come together to make a lasting difference. "It really does take a village," she says. "It is incredible what is possible when we work together. To witness the success of this partnership is to know that there is hope. We are deeply grateful to all who have supported the We see you campaign and who continue to give in support of local mental health programs," she says.



Mike Gawliuk, CEO, CMHA Kelowna

Allison Young, CEO, KGH Foundation

Ginny Becker, Executive Director, CAC Kelowna

Ellen Boelcke, Executive Director, Kelowna Community Resources



Blake Comeau and Josh Gorges celebrate the return of the Homebase Charity Slo-Pitch Tournament.

"It is incredible what is possible when we work together. To witness the success of this partnership is to know that there is hope. We are deeply grateful to all who have supported the We see you campaign and who continue to give in support of local mental health programs"

- Ginny Becker, Executive Director, CAC Kelowna

EVENTS & TRADITIONS

# THE INNKEEPER'S GALA A REMARKABLE LEGACY



From its inception, the now legendary Innkeeper's Gala at the Hotel Eldorado has been the marquis event to kick off the holiday season here in Kelowna. For over three decades now, Innkeeper's has not only been the party of the year, but the funds raised have also made a profound impact in advancing health care at Kelowna General Hospital and in the community.

The history of the Innkeeper's Gala is truly the story of a locally based, family-owned hospitality property giving back to the people who live in their home community. During their ownership, the Nixon family established the Innkeeper's Gala as an annual fundraising event in support of Kelowna General Hospital (KGH). In 2014, Argus Properties bought the

Eldorado from the Nixon family and kept the commitment to the Eldorado's philanthropic traditions, including the Innkeeper's Gala.

Over the years, the Innkeeper's Gala has rallied the community in support of the most urgent health care needs at KGH. These include raising funds in support of women's health, youth mental health, pediatrics, JoeAnna's House, helping to bring advanced heart rhythm services and electrophysiology to the hospital, and most recently, support for cancer care surgical and diagnostic equipment.

Over the years, the Innkeeper's Gala has raised over \$1.2 million in support of KGH and local health care.

After a two-year hiatus, the Innkeeper's Gala made a triumphant return in 2022. Over \$200,000 was raised to support the purchase of IHC (immunohistochemistry) stainers for the KGH Pathology Lab. These specialized instruments are used to characterize cancer cells.

Previously, approximately 25 samples per day were sent to the BC Cancer Agency in Vancouver because the KGH Pathology Lab

was unable to complete the tests in-house with older equipment and technology. Sending tissues to Vancouver prolonged diagnosis and treatment planning, adding to a patient's already anxious state.

The new IHC stainers significantly expand the capabilities at KGH and reduce the need to send samples to Vancouver. This means that patients do not need to wait as long for a diagnosis and oncologists can establish a plan of treatment sooner.

"We are grateful to the Nixon Family for establishing this event, to the ongoing commitment of Argus Properties and the outstanding staff at the Hotel Eldorado," says Allison (Allie) Young, CEO of the KGH Foundation. "It's become a tradition! Such an incredible evening of food, dancing, and fun with friends that continues to leave an indelible mark on health care in our community."

**The KGH Pathology Lab is currently developing and validating specialized IHC tests to help detect biomarkers in certain cancers. Biomarkers are targets on tumor cells that sophisticated cancer treatments can attach to, destroying the tumor cells minimal impact on the surrounding cells.**

UPDATE

# FUNDRAISING EVENTS

In early 2022, the return to pre-pandemic normalcy was punctuated by the lifting of mask mandates in most spaces (except for medical settings). Throughout the year we also witnessed a resurgence in in-person events in support of the KGH Foundation.

And it has been wonderful to see our community's smiling faces again.

Fundraising events have emerged as powerful catalysts in support of health care advancements, playing a pivotal role in fostering community engagement and bringing awareness

to the community's health care needs, while also spreading hope for the future.

Through the collective efforts of event organizers, sponsors, donors and participants, these special occasions create a sense of unity and channel contributions into a force capable of transformative change. These efforts and the unwavering support of the community reinforce our commitment at the Foundation to improving the lives of patients and their families and transforming health care, close to home



**April 2022**

KGH Foundation Day of Giving

**May 2022**

Knox Mountain Hill Climb Bands, BBQ, Beers and Balding

**June 2022**

Gorges-Comeau Homebase Charity Slo-Pitch Tournament  
The Mortgage Group Annual Golf Tournament  
Good Lemonade Day  
Wentworth Music: One Final Show

**July 2022**

Okanagan Dream Rally  
Bye Bye Beardie  
Okanagan Celebrity Classic Golf Tournament

**September 2021**

Heart of Gold  
Christian Louboutin Pop-Up Salon  
Peachland Ambassador's Pageant  
Wilden Wild One Run

**October 2021**

Better Together Day  
KSS Class of '72 Graduation Reunion  
Black Mountain Haunted House

**November 2021**

Hotel Eldorado Innkeeper's Gala  
Season of Giving Calendar (Kelowna Sunrise Rotary)

**December 2022**

Vineyard Glühwein (St. Hubertus)

**February 2023**

Kelowna Nordic Stride & Glide for KGH  
Telus Kelowna Cup at Big White

JOEANNA'S HOUSE

# MAKING LEMONADE

There's something truly magical, maybe even nostalgic, about a cold, refreshing glass of lemonade on a hot, Okanagan summer day. The only thing that can beat that first sip, is the sweetness of knowing it's for a worthy cause.

On a sun-kissed Saturday in June 2022, the inaugural Good Lemonade Day was held in support of JoeAnna's House. Families from nooks and Cranbrooks across the province joined together to host more than seventy lemonade stands in fifteen different communities.

The sell was a simple and compelling one – a glass of lemonade in support of JoeAnna's House, a home away from home for the families of patients from across the Southern Interior of BC who require advanced care at Kelowna General Hospital (KGH). The promise: to keep families together when they need it most.

The inaugural Good Lemonade Day proved to be an overwhelming success, raising over \$17,000 for JoeAnna's House. This remarkable achievement fueled the anticipation for the sophomore event in 2023, where even more families and communities across the region pledged their support.

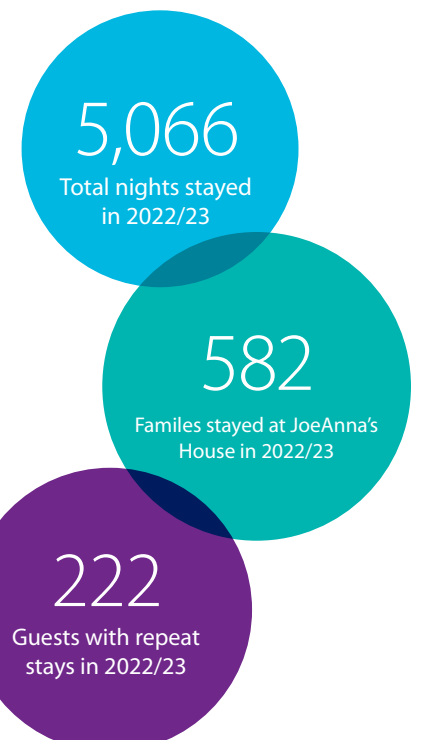
"Family is everything to us, so supporting a cause centred on keeping families together during some of their most difficult times was an easy decision," shares Brandi Ripel, a parent of one of the participating families in Salmon

Arm, BC. "Being able to spread the word about JoeAnna's House while selling lemonade was such a fun and easy way to get the kids involved and excited about helping others."

It was a wonderful display of families supporting families and everyone embraced the opportunity to be part of this community collaboration. Lemonade stands became gathering spots for connection and inspiration.

Taylor, a young girl on the autism spectrum, eagerly embraced the opportunity to run her own lemonade stand. With her mother's support, she set up shop in their Kelowna neighbourhood. Taylor cherished the freedom to manage her own lemonade stand, serving refreshing beverages and collecting donations from grateful passers-by. The experience was so fulfilling, Taylor expanded her efforts, setting up a second location at her residence to collect more donations. "It feels really special to be part of a huge multi-city event supporting such a great cause," shared Taylor's mom, Hailey.

"It's not just about lemonade," says Amy Nunn, Good Lemonade Day Committee Member and VP of Sales and Marketing for Prestige Hotels & Resorts. "It's about community, teaching our kids that the hardships of others matter and that there is always something we can do to help. That when life gives you lemons, you can always make lemonade."



Good Lemonade Day presenting sponsor, Laing Service + Maintenance, set up their lemonade stand at JoeAnna's House

"Family is everything to us, so supporting a cause centred on keeping families together during their most difficult times was an easy decision"

- Brandi Ripel



The Prestige Harbourfront Resort in Sooke, BC. Prestige Hotels & Resorts is another major supporter of Good Lemonade Day and had stands at their hotels across the province.



## YOUR SUPPORT

## MEMORIAL GIVING

The KGH Foundation is honoured to have received gifts in memory of those listed below in the last fiscal year.

Gary S. Abel	Bob Duncan	Robert Jagielak	Lois M. Newton	Monica A. Sommerfeld
Gordon Almond	Lynda Dunham-Wilkie	Joseph L. Jamison	Sharon A. Nichol	Neill Spencer
Allan Anderson	Derek Easton	Nick Janzen	Terry D. Nichol	Edward Stapleton
David Anderson	George Edgelow	William W. Joe	Peter Nott	Catherine D. Stevenson
Leslie Atwell	Kirsty Elmslie	Tanya A. Jorde	Irma Nowarre	Phil A. Stewart
Jaida-Lynn C. Ausman	Nettie Engbrecht	Karl Kaesmodel	Gail Osborn	Maria Straccini
Dan Bach	Dan Enns	Ksenia Kerr	Gordis Page	Catherine Sullivan
Frank Baranieski	John H. Esplen	Rita Kilmartin	Mary Panchy	Ronald Sulz
Linda Barclay	Valeda E. Fix	David Kirbyson	Ernie Penninga	Toshiya Suzuki
Helen Barr	Freda B. Flagel	Lena M. Klassen	Douglas G. Peppard	Janice Swallow
Domenico Bartolillo	Mark P. Flahiff	Gordon Kolcun	Elaine Pepple	Sachiko Tanaka
David Bate	Arthur Fletcher	Ernie Kort	Carole Perigo	Yukihisa R. Tanaka
Wayne Beech	Larry Flynn	Nicholas Kummer	Joseph-Christopher N. Perrault	George Terada
Jean C. Bembenek	Shirley A. Fontaine	Serge Kutukian	David Perron	Alfred Tereposky
Audrey Bennett	Karen Forbes	Douglas A. Lagore	Douglas R. Perry	Scott Thompson
Garry F. Benson	Shirley A. Fraser	Dale Lang	Donna J. Petch	Battlefords and District Community Foundation
Carol L. Binne	Philip S. Fredericks	Robert D. Lang	Kerry Peterson	Carla M. Thresher
Terri Birker	David French	David French	Carmela Pomponio	Brian C. Todd
Gerry Bleiler	Jack Fullerton	Juliana Lemmon	James R. Pomrenke	Agnes Tonhauser
Audrey Bone	Kerri Gabbana	Martin Linder	Raymond Poole	Ruth Trelleburg
Dufton Booth	David W. Galt	Michael F. Linley	Ilene M. Porter	John M. Truscott
Jeffrey L. Brower	Kenneth Ganshirt	Robin Long	Norman Portman	Anne Tucker
Daniel Buchanan	Joey J. Gerolami	Denis T. Lordon	Lori N. Pringle	Sheree A. Ulrich
Gary C. Buckborough	Isabel Glover	Ayla G. Loseth	Walter Prochnavy	Jack Unser
Robert Bucknell	Lorene J. Graham	Glennis A. MacDonald	Jagdish Rai	Ruth Vandenbor
Louise Burdeyny	Mary C. Gray	Christina V. MacKenzie	Larry K. Ratzlaff	Myrna Vanson
Jim Buttenham	Aleah Gregory	Irene M. Manchur	Mavis Rayson	Adela M. Wahl
Alan F. Cameron	Else Grimm	Reiner Mannhardt	Allan D. Reid	Sharon S. Wammer
Dorothy Cameron	Jakob Grimm	Donald Marsh	Jean Reveyrand	Archie C. Watson
Sylvia E. Cameron	Clifford L. Groat	George Marsh	Leo Robert	Linda M. Webb
John E. Casey	Cornelius Hallisey	Clifford D. Maruk	Kay K. Roberts	Michele A. Wells
Jeanne Chailier	Edward Hamanishi	Elizabeth J. Matthews	Thomas M. Robinson	Margaret Weys
Jane L. Chevrier	Gerry Hanert	Lulu Mayan	Armand Rochon	Donald Wickett
Deb Cochrane	Leila Hanson	Darrell J. McGuire	Ruy Romano	Bradley A. Wilde
Ian M. Collison	Misako Hatanaka	Dorothy McKenzie	Bryan Rosekrans	Edith Wilkins
Eileen Cook	Sugio Hatanaka	Joanne McMillan	Jean Ross	Peter Wilson
Lucinda Costa	Annette Heinrich	Heather McTavish	Weston Ross	Bennie O. Wittke
Jerome Coupal	John Hemmett	Ian W. Melling	Mike Rout	Sydney E. Wood
Daniel Craigen	Robert Hepburn	Tesla Metcalfe	Ron Rubadeau	Douglas Woodley
Onofrio Curatolo	Carl Herman	Joseph Mlikotic	Armerinda Russo	Reta Woodley
Frank W. Czuboka	Rudy Herman	Natalia Mlikotic	Mary C. Sands	Vincent Yakielashke
Philip d'Aoust	Edward Herzog	Bernard H. Moisey	Ernest W. Sarsons	Gerry Yamaoka
Frank Darby	Thomas Hill	Minoru Mori	William Sass	Ted Ziajka
Roy Davidson	Ed Hoffman	Ken Morrow	Peter Schumann	Allen M. Zoldy
Jim Daynard	Rose E. Holtzki	Colleen L. Mulvihill	John Simandl	Gloria Zubko
Daniel P. Deck	Margaret Horovatin	Bruce Munroe	Martha J. Simons	Josef Zuppiger
June Demcheson	Lawrence Howard	Bonnie A. Murphy	Claude Simpson	
Margaret Desharnais	Marilynn J. Huband	Tributee Name	Margaret E. Simpson	
Parm Dhaliwal	John Huggins	Ali Nazerzadeh Yazdi	Maridee P. Skidmore	
Don Dobson	Greag Hurd	Julian Neale	Annabelle Smith	
Eugene Downey	Nicholas K. Husch	Holly A. Nevdoff	Joseph Smith	

## YOUR SUPPORT

## ORGANIZATIONAL GIVING

Community organizations who have generously donated \$500 or more from April 1<sup>st</sup>, 2022 to March 31<sup>st</sup>, 2023

247 Service Corporation	Fields	KSS Grads of 72 Alumni	Player's Choice Sportscards & Collectibles	Charters Ltd.
Abbott Street Cafe	Forbidden Spirits Distilling Co.	Laing Roofing	Prem Holdings Ltd.	SOPA Fine Arts
ACT/UCT Kelowna West Council #1003	FPS Fluid Power Solutions	Lakehouse Home Store	Prestige Beach House Kelowna	Sparkling Hill Resort
Alpha Omega Security Ltd.	Fraserway RV	Lamar Transit Advertising	Prestige Hotel Vernon	St. Hubertus & Oak Bay Estate Winery Ltd.
Aon Risk Solutions	Garnett Valley Gang Society	Leavitt Machinery	Prestige Inn Golden	St. Margaret's Anglican Church
Aquafit Ladies of Sandalwood	GeoPacific Consultants (B.C.) Ltd.	Knox Mountain Hill Climb	Prestige Mountain Resort	Steve Laursen Personal
Aqueduct Foundation - The McCutcheon Foundation	Geotility Geothermal Installations Corp.	Ledcor Construction Limited	Prestige Rocky Mountain Resort	Real Estate Corporation
Arrowleaf Cellars	Gloria Di Djo Foundation (K.L. Stutters)	Liv Artisanal	Primary Engineering	Stober Foundation
Artistic Awning	Gorman Brothers Lumber Ltd.	Longhedge	PRIME Kelowna	Summerhill Winery
Ashcroft & District Health Care Auxiliary	Harmony Homes	Lost Creek Septic & Excavation	Love HR Inc.	TB Vets Charitable Foundation
Audi Kelowna	Harmony Honda	Lyle and Berna Shoemaker Private Giving Fund	Provincial Employees Community Services Fund	TBC Liquor Merchants (Lake Country)
August Auto Group	Heritage Club Chapter 29	Maestro's at Manteo	Pro-Well Contracting Ltd.	Team Construction Management
Battlefords and District Community Foundation	Hillberg & Berk	Mainland Hard Chrome & Hydraulics Ltd.	QB Gelato & Desserts	Team TELUS Cares
Bear Land Development Services	Hotel Eldorado	Margaret Valley Landscaping	Quail's Gate Vineyards Estate Winery	Teddy Bear Hug
Belvedere Place Development	HQS Consulting Services Inc.	Martin Motor Sports	Raymond James Ltd.	The Adela & Ed Wahl Foundation
Benson Law LLP	Hyper Hippo Entertainment Ltd.	Martin's Lane	RBC Dominion Securities	The Adele Wooldridge Legacy Foundation
Black & McDonald	Ignite Design, Mike Czuboka	Meal Prep for You	RBC Phillips, Hager & North Investment Council	The Jim and Laverne Popowich Foundation
Brandt's Crossing Condominiums Recycling Committee	Impark	Mel and Pat Rowat Family Fund	RBC Royal Bank	The Keg Spirit Foundation
Callahan Property Group	Innov8 Digital Solutions and the Brosseau Family	Mission Creek Animal Hospital	Red Bird Brewing	The Kidney Foundation of Canada
Canada Life	Interior Savings Credit Union	Mission Group Enterprises Ltd.	Red Moose Immigration Services Inc.	The Mortgage Group
Cancade Investments Corp	Ironclad Developments Inc.	Mission Hill Family Estate Winery	Red Tag Fitness	The Okanagan Table
Cannera Holdings	James Paterson Fund	MKB Properties Inc.	Reichwald Family Foundation	The Owl & Pheasant Social Club
Capri Insurance	Jared Franczak Professional Real Estate Corporation	MNP	Relvas Catering	The Sargent Family Charitable Foundation
Cardinal Capital Management	Kapler-Carter Foundation	MSC Metal Structure Concepts Inc.	Reuter Kotler Real Estate Team	The Tong And Geraldine Louie Family Foundation
Carnegie Award Alumni Foundation	Kelowna Adult Softball Association	Multi-Power Products Ltd.	Revelstoke Masonic Holding Society	Thomas Alan Budd Foundation
CEDA Services and Projects LP	Kelowna Concierge	New Country 100.7	Risorgimento Holdings Inc.	Tiki Time Tours
Cherry Hill Coffee Inc.	Kelowna Canadian Italian Club	New Leaf Physiotherapy	Rockets Alumni Association	Tommy Guns Original Barbershop
Christ Evangelical Lutheran Church	Kelowna Capital News	Newport Private Wealth	Rogers' Family Charitable Trust	Touchstone Law Group LLP
CIBC	Kelowna Concierge	Nicola Wealth	Royal Canadian Legion #26	Troy Life & Fire Safety Ltd.
Coldwell Banker/Horizon Realty Ltd.	Kelowna Falcons Baseball Ltd.	Northern Cherries Inc.	Royal Canadian Legion Branch 69	True North Distributors
Connor, Clark & Lunn Financial Group	Kelowna Golf & Country Club - Sunshine Ladies Open	Northern Computer	Ruth Nuyens Whitson Foundation	uCapital
Cops For Kids	Kelowna Insta Print	Northside Industries	Sandrine French Pasty + Chocolate	Urban Bulldogs Against Kids Abuse
Charitable Foundation	Kelowna Nissan Ltd.	Nor-Val Rentals Ltd.	Save On Foods - Glenmore	Valley Curbing Ltd.
CPolar Technology	Kelowna Now	Orchard Gardens Seniors Community	Save On Foods - Nakusp	Variety the Children's Charity
Creative Mortgage Corp.	Kelowna Rockets	Pace Spin Studio	Save On Foods - Orchard Plaza	Vice & Virtue Brewery and Restaurant
Dean's Plumbing & Heating Ltd.	Kelowna Springs Golf Club	Panatch Group	Save On Foods - Penticton	WEKID Manufacturing
Dentons Canada LLP	Kelowna Sunrise Rotary Club	Parker Hannifan Foundation	Save On Foods - Revelstoke	Wentworth Music
Doak Shirreff Lawyers LLP	Kelowna Taiwanese Cultural Society	Peachland Ambassadors	Save On Foods - Vernon Hwy 6	West Coast Home & Truss Ltd.
DWF Mindcrest LLP	Kelowna Toyota	Peachland Dental Centre	Save On Foods - Westbank	Westcorp Inc.
Dyer Family Fund	Kelowna's Classic Rock, K96.3	PEAK Cellars/O' Rourke Family Estate Winery	Save On Foods - Winfield	Western Roofing Master Roofers
Elite Mile Wine Tours	Kim Larson - All Elements	Per Kjell Sundin Foundation	Schutzclub Edelweiss	Yitung Buddhist Temple
EnGedi Homes Ltd.	Kitsch Wines		Singer Joint Spousal Trust	
Enterprise Holdings Foundation	Knights of Columbus - Father DeLestre Council 6233		Sky High Disposal	
Evergreen Irrigation Ltd.	Knox Mountain Metals		Skylux Luxury Helicopter	
Excel Drapery Installation Ltd.	KONE Inc.			

## YOUR SUPPORT

## INDIVIDUAL GIVING

Supportive individuals who have generously donated  
\$500 or more from April 1<sup>st</sup>, 2022 - March 31<sup>st</sup>, 2023

In memory of Albert Abougoush  
Sheila Adams  
Diane and Edward Aizen  
Pat and Linda Aldous  
Carlos Alentejano and Renee Merrifield  
Krista Almeida  
April Anderson - A Game Photography  
Christo Andrich  
Noreen Angus  
Anonymous Donor through the Victoria Foundation  
Lynn and Rob Archibald  
Anthony and Grace Armstrong  
Elizabeth Arnold-Bailey and Robert Bailey  
Linda Arscott  
Sharon Austin  
Michael and Janet Azhadi  
Bonnie Bailey  
Heather and Kevin Bakay  
Craig and Doris Baker  
Gord and Linda Ball  
Adair Banerd  
Jim and Shirley Banman  
Lyn and Joanne Bannister  
Brian and Bev Barkman  
George and Stephanie Barnes  
Roy Barron  
Ron and Evelyn Bartz  
Dan and Judy Basso  
Dieter Bauer  
D'Arcy Beatty and Mrs. Beatty  
Dianne Beck and Wayne Keiser  
Michael and Shirley Becker  
Barbara Bell and Kenneth Munkholm  
Susan Bell and Alexander Harrower  
Gord and Beverly Bennett  
RJ and Lois Bennett and Family  
Harry Benson  
Melissa and Jasper Berg  
Linda and Joe Berger  
June and Gus Bergh  
Vivian and Robert Bernard  
Mary Ann Bernier  
Madeline Bestick  
Darcy and Karina Biagioni  
Douglas Bidwell  
Len Bidwell  
Robert Bidwell  
Deborah Bishop  
E Bissoon  
Jay Blackford  
Lindsay and Tony Blackner  
Blenk Family Fund

Bruce Bolton  
Roy and Wendy Boorse  
D'Arcy Booth  
Eileen Borge  
Peter Borszcz  
Dr. Jill Boulton  
Joan Bousquet  
Gary Bradfeld  
Dora Jean Brady  
Donald and Nancy Branch  
Doyle and Susan Bray  
Roger and Donna Brett  
Bernice Brodie  
Richard and Deb Brodsky  
Barbara Brookes  
Karen and David Brown  
Gary and Janet Brucker  
Shirley Buchan  
Marjorie Buchanan  
Chris Bunka  
David and Joan Burke  
Rose Burley  
June Burnham  
Judy and Graham Burns  
Beverly Jean Busch  
Reginald and Nancy Butler  
Hamid and Anne Butt  
Amrit and Shauna Buttar  
Maria and John Byland  
Ted Callahan  
Nikki Callaway  
Ursula Car and Garth Bracken  
Bea Carignan  
John and Maxine Carter  
Amanda Cascaden  
Jim and Marcia Cavin  
Peter Caws  
Peter and Carol Chalick  
Jennifer and Gordon Charles  
Dallas and Carmen Chelick  
James Chrenek  
Tom Chrzan  
William and Donna Clarke  
Dr. John Cochrane  
Helmut and Erika Colius  
Blake and Lacey Comeau  
Dr. Stephen and Teresa Connor  
Kathy and Michael Conway  
Evan and Vanessa Cooke  
Veronica Copeland  
Bill and Charlene Corbett  
Dr. Lesley Cormack  
Maureen Corrigan  
Armanda and Giorgio Cortina  
Amandio and Lucuida Costa  
Allyssa Costerton-Grant and Cory Davy

Curtis Cousins  
Colleen Cowman  
Lawrence and Helen Crabb  
Donald and Barbara Craig  
Daniel Crampton  
Dave Cronquist and Barb MacPherson  
Dale Darychuk  
Maureen Davidson  
Roy and Val Davidson  
George and Dianne Davis  
James and Delores Davis  
Ashley Davy and Stephanie Koenigshofer  
Richard and Maryann Deacon  
Mario DeCrescentis and Marion Boyd  
Enzo and Linda DeLuca  
Marilyn and Bruce Dika  
Angele Dobson  
Terry Dobson  
Mary Dockstader  
Paul Dockstader  
Daniel Doucette  
Paul and Cathy Douglas  
Aaron and Lindsay-Anne Dow  
Elizabeth Downey  
Frank and Erika Draxinger  
Shirley Dreja  
Edith Dunn  
Marty Dupree/KPD Doors  
Elaine Durst  
Patrick D'Vaz  
Tom Dyas  
Thelma Ehman  
Colby Elmer  
Elaine and Don Embury  
Jacki and Stephen Eng  
Devin and Matthew Enns  
John and Jan Enns  
Russ Ensign and Family  
Nancy and Frank Estergaard  
Pat Evans  
Rob Evans  
Mary Fabris  
Dr. Steven and Gayle Faigan  
Hugh and Sherri Faloon  
Susan and Oscar Faoro  
Frances Farr  
Dr. Sheila Fergusson and Dr. Craig Render  
Edna Ferrel  
Chris Fibiger  
Yvonne Finlay  
George and Jeanette Fish  
Bob and Darlene Fisher  
Ken and Janine Fisher

Norm and Val Fix  
Louise Flahiff  
Murray and Isabelle Fleming  
Dick and Joanie Fletcher  
Norma Fletcher  
Elaine Flewwelling  
Douglas and Jean Flintoft  
Aniela Florczynski and Gary Darychuk  
Richard and Sheila Forster  
Robert Fowler  
Cody and Amanda Franson  
William Franzman  
Karlen French  
Jason and Nikki Friesen  
Daniel and Patsi Gagnon  
Stephane and Natalie Gagnon  
Clayton and Shannon Gall  
Harmeshwar Gandha  
Cory and Leah Garras  
Margo Gartner  
Antonio and Jeanne Gaspari  
The Gavigan Family  
Gordon and Judy Geddes  
Shauna George  
Lee and Jack Gibson  
Akajlot and Harbinder Gill  
Donald and Marjorie Gill  
Karan Gill  
Ross and Airlie Gilley  
Jennifer and Samuel Goodwin  
Josh and Maggie Gorges  
Kenneth Graham  
Tracy and Larry Gray  
Davey Green  
Rita Greggor  
Zinnia Gregory  
Allan Grelowski  
Marian Grimwood  
Paul Guidon  
Alan and Mary Ann Guy  
Edward and Theresia Haberman  
Ross Hadfield  
Mona and Jerry Hadley  
George and Zeena Hakim  
Richard and Karen Hall  
Bruce and Laureen Hamilton  
Terence and Nancy Hamilton  
Garth Hanlon  
Christine and Mike Hansen  
Eric Harden  
Joy Harper and Daniel Neill  
Karen and Edward Harper  
Dave and Anne Harrison  
Gail and Don Harrison  
Dr. James and Linda Harvey  
Patricia Harvie

Kathryn Hatcher  
Kathy and Jeff Hatrick  
Victor Hein  
Suzanne and Darcy Henderson  
Dale Herzog  
Al and Irene Hildebrandt  
Len and Ethelwyn Hintz  
Akiko Hobbs  
Robert Hodgins  
Jane Hoffman  
Ronald and Marilynn Holowaty  
Cairy Holby  
Dina and George Honke  
Fred and Elsie Horner  
Lynn Houle  
Jeanette and Thomas Housman  
Nancy and Lyle Howlett  
Al and Alyson Hryniuk  
Joe and Kristi Huber  
Maria and Jack Hudolin  
Philip Hughes  
Humphreys Family  
Anna Hunt-Binkley and Manse Binkley  
Hannelore Ingelevics  
Gary and Lana Irwin  
Glen and Darlene Jackson  
Michael and Kim Jacobs  
Graeme and Jane-Marie James  
Karan Gill  
Sonja Janzen  
Dr. Hugh and Valerie Jarvin  
Steve and Marylea Jarvis  
David and Debra Jensen  
Kevin and Amanda Johnson  
Lorne and Noella Johnson  
Mark and Anida Johnson  
Edith Johnstone  
Paige Johnstone  
Bruce and Jacqueline Jones  
Randy and Janet Jones  
Zachary Jones  
Betty Jong  
Murray and D'Arcy Joyce  
Robert and Shirley Joyce  
Janis and Wes Kaban  
Dr. Phil and Sue Kachanoski  
Ronald and Susan Kaiser  
Ray and Kay Kandola  
Myrtle Karlicki  
Lori Kavanagh  
Roy and Nicki Kawamoto  
Mark and Hanne Kellock  
Kelly and Cathy Kennedy  
David and Anne Kennedy  
Andrea Kiehlbauch  
Mark Kinnear and Debbie Bond  
Trent and Ria Kitsch

Peter Klassen  
Rita Klassen  
James and Nancy Klein  
Elaine and Keven Klinkner  
Gerald and Lilian Knauer  
Angela Knaus and Garvin Beattie  
Kevin Knight and Family  
Fred Koehle  
David and Marilyn Kornell  
Michael Koss  
John and Trina Kot  
Bern and Donna Kotelko  
Geoff Kowosky and Metro Liquor  
George and Cornelia Kroker  
Boris Kulynych  
Ron and Debbie Kushneryk  
Thomas Labrecque  
Phil LaChambre and Cathy MacDonald  
David and Elsie Laing  
Pierre Lalonde and Maureen Barnes  
Dennis and Rita Lang  
Doug and Georgiale Lang  
Marguerite Lang  
Barry Lapointe  
Debbie Larry  
Carl Lawrence  
James and Sharon Lawrence  
Michael Le Feuvre  
Matt and Stephanie Lebedoff  
Matt Lebedoff and Rhonda Jacobsen-Lebedoff  
Graham Lee and GSL Group  
Mary Lee and Ed Zurawell  
Jordan Leibel  
Dr. Ian and Theresa Leitch  
Joe and Sharlene Limberger  
Robert Linder  
Larry and Mona Lindstrom  
John Link  
Reid Liske  
Dr. Neil Long  
Brian and Linda Lovig  
Christy Lovig  
Melvine and Jean Loyst  
Kam Lun  
Ryan Lund  
Alex Lye and Chi-Fui Chong  
Daniel and Deborah MacDonald  
Linda MacDonald  
Dr. J and Maria MacDonnell  
Joe and Donna Maciel  
Alexander MacLachlan  
Peter and Margaux MacPherson  
Dr. Don and Kim MacRae  
Tom Mah  
Joanne and Dennis Maher  
Clare Mallow  
Dave and Marilyn Marcoux  
Blanche Marshall  
Gordon and Anne Marshall  
Elizabeth Martin  
Scott Mathers and Elaine Fleming  
Werner Mathys  
Tom and Debra Mauro  
Herb and Janet May  
Jack May and Penni Botham-May  
Kelly McAuley  
Stuart McAusland  
Dave and Andrea McFadden  
Stuart and Jennifer McFadden  
John McFarlane  
Sean McFayden  
Dawn McGrath  
Allan and Mildred McInnes  
Dr. Jan and Linda McIntosh  
Steve and Marian McKay

Stanley McKenzie  
Brian McKernan  
Matthew and Debbie McKernan  
John McMahon - Royal LePage  
Beryl McTavish  
John and Lydia Melnichuk  
Kate and Kyle Melvin  
Lilliana Merler  
Jack and Maureen Mieras  
Brian and Monique Miller  
Bruce and Tracy Miller  
Dean and Mary Miller  
Tim and Lorraine Miller  
Dorothy Mills  
Patricia Moir  
Leslie Gail Moisey  
John and Marlene Moncrieff  
Jade Monette  
Evangeline Moody  
Roy and Pamela Moor  
Pat and Gloria Moore  
Dr. Gerald and Susan Morrison  
Gerald and Mary Morton  
Jennifer Morton and Jason Poitras  
Paul and Colleen Mulvihill  
Sue Munn  
Margaret Murby  
Donald Mushta  
Scott Nazaruk  
Arvin Nazerzadeh-Yazdi  
Maurice and Gweneth Neil  
Mike Newman  
Sandra Newton  
Mary Lee and Ed Zurawell  
Lyle and Tessa Nicholson  
Thomas Nickerson  
Barry and Josephine Nickle  
Kristie and Derek Nyrose  
Shauna and Darcy Nyrose  
Dr. Terrance and Linda O'Farrell  
Ruth and Chris Olsen  
Graham Ord  
Tom and Lisa O'Rourke  
Raymond Page  
Eric Panchy  
William Pao  
Nick and Arlene Papov  
Jason Parkes  
Justin Pasutto and Jillian Harris  
Linda Pedersen  
Tammie Penty  
David Perron and Patricia Kully  
Richard and Martha Person  
Dominic and Sharon Petraroia  
Phyllis and Dennis Pilon  
Valerie Piot  
The Pistawka Family  
Mike and Nicky Platt  
Dr. Gail Plecash  
Michael Pohanka  
Patricia Poitras  
Dr. Derek Pollard and Dr. Courtney Pollard  
Blanche and Maureen Polowick  
Marty and Margaret Porubanec  
Evans and Mardene Premachuk  
Jutta Prem-Stein and Len Stein  
Andrew Prior and Lesley Hobden  
Louise and Larry Proke  
Janis Pronovost  
Frank Proto  
Rick Pushor  
Ron and Susan Rampone  
Darlene Ramsay  
Dylan Ranney  
Colin and Tannis Rasmussen

Ed and Betty Rebus  
Dr. Magda and Kyle Reccsky  
Wade and Danica Redden  
Erna Redschlag  
Mike and Jen Reece  
Robert and Irma Reid  
Pamela Reiswig  
Catherine Renkas  
Leo and Debbie Robert  
Carol Rogers  
Lee and Ebony Rogers  
Rhys and Anne Rogers  
Ralph and Carolyn Romans  
Tim Roseanu  
Leona Rosekrans  
James Ross and Ashley Bedwell  
Calvin Rout  
Melvin Rowat  
Nola Roy  
Charles Ruigrok  
Lawrence and Jane Rumney  
Joan Rundle  
Doug Ruttan  
Bernie Ryan  
Allan Salisbury  
Mark Sander  
Dr. Jay Sarbit and Dr. Gayl Sarbit  
Glen and Ann Sather  
Claude and Marlene Saumure  
Veronica Scarpino  
Ken and Carol Scheske  
Edward and Shirley Schiller  
Nora Schiller  
Patrick Ng  
Deb Nicholson  
Lyle and Tessa Nicholson  
Thomas Nickerson  
Barry and Josephine Nickle  
Kristie and Derek Nyrose  
Shauna and Darcy Nyrose  
Dr. Terrance and Linda O'Farrell  
Ruth and Chris Olsen  
Graham Ord  
Tom and Lisa O'Rourke  
Raymond Page  
Eric Panchy  
William Pao  
Nick and Arlene Papov  
Jason Parkes  
Justin Pasutto and Jillian Harris  
Linda Pedersen  
Tammie Penty  
David Perron and Patricia Kully  
Richard and Martha Person  
Dominic and Sharon Petraroia  
Phyllis and Dennis Pilon  
Valerie Piot  
The Pistawka Family  
Mike and Nicky Platt  
Dr. Gail Plecash  
Michael Pohanka  
Patricia Poitras  
Dr. Derek Pollard and Dr. Courtney Pollard  
Blanche and Maureen Polowick  
Marty and Margaret Porubanec  
Evans and Mardene Premachuk  
Jutta Prem-Stein and Len Stein  
Andrew Prior and Lesley Hobden  
Louise and Larry Proke  
Janis Pronovost  
Frank Proto  
Rick Pushor  
Ron and Susan Rampone  
Darlene Ramsay  
Dylan Ranney  
Colin and Tannis Rasmussen

Tim Killip  
Priya and Mike Stearns  
Laurel Stein  
Neil and Lorette Stephenson  
Steve Glegg  
Gayle and Michael Stevens-Guille  
Lorraine and Gerry Stevenson  
Ben Stewart  
Ray and Jennifer Stewart  
Rosemary Stewart  
Tony and Lisa Stewart  
Stewart Storie and Gloria Heung-Storie  
Gil and Olga Strauss  
Archie and Christine Stroh  
Gerry Strouger  
Frances Strusa  
Anne Stuart  
Hugo and Agnes Stuerle  
Michael Stutter  
Don and Dorothy Sugimoto  
Derek Takahashi  
Sabrina Tan  
Herb and Cheryl Tanaka  
Larry Taylor  
Tristan Taylor  
Ludwig and Patricia Teichgraber  
Jordan Tetreau and Dr. Lauren Capozzi  
Jake and Joy Theissen  
Jacob and Reatha Thiessen  
David Thompson  
Dorothy E. Thomson  
Uldine Timtiman  
Darrell and Katherine Tochor  
Agnes Tonhauser  
Henry & Phylis Tostenson and Family  
Sofija Trotic  
Dr. Steven and Terry Tuck  
Scott Tupper  
David and Ethna Tutt  
Michael and Cherald Tutt  
Tsumotu Ueda  
Aaron Urquhart  
Pat Van Mullem  
Len and Francine Vandenberg  
Sharon Varette and Cam Kourany  
Wendi Varley  
Aleixo Vieira  
Bruce and Elizabeth Vogl  
Fred Wagner  
Sally Wallick  
Dorothy Wall-Partington  
Dixon and Taylor Ward  
Kim and Deborah Ward  
Carla Waters  
Nicole and Kelly Watson  
Julia Watterson  
Robert Webster  
David and Priscilla Weir  
Weiss Family  
Dale and Hedy Wentworth  
Nori and Kristyn Wentworth  
Craig and Robin White  
Richard White  
E Wightman  
Dr. Daryl and Erin Wile  
Peter Wilson  
Rosemary Wilson  
Allan and Carole Wingenbach  
Bren Witt  
Herald Wolgram  
Frances Wood  
Councillor Loyal Woodridge  
Dave and Helen Work  
Brenda and Brian Yamamoto  
Les and Santhy Yeager

Allison Young  
Ed Yurkiw  
Alvin and Alice Zaharko  
Rhonda Zakala and Gino Dal Ponte  
Virginia Zylas

## VOLUNTEER GIVING

# IMMEASURABLE TREASURES: THE IMPACT OF TIME & TALENT

It is no secret that the current hiring environment is a challenge for many businesses. Having the right person in the right role, someone friendly, reliable, and responsible, can truly make or break the experience customers can have. So, it is easy to understand why we treasure our KGH Foundation volunteers so deeply. Their gift of time and talent is so much more than a four-hour shift each week.

The contributions of volunteers, including the KGH Foundation Board of Directors, various committees, JoeAnna's House, and event volunteers, are significant. In 2022/23, over 300 volunteers gave 48,000 hours of their time in the KGH Foundation business venues. Together, they brought in almost \$2.8 million dollars through sales at the Perking Lot, KGH Gift Shop, Royal Bistro and Rutland Thrift Store combined.

"Our volunteers are invaluable," states KGH Foundation's hospital venue supervisor, Gabriela (Gabi) Rubio Bocangel. "Without them, our margins would be dramatically affected. The profits from our venues are a valuable source of revenue and are vital to advancing projects that bring world-class health care to our community."

If anyone knows what the volunteer experience is like, it's Gabi herself. She started volunteering in the Perking Lot when she was 14 years old and continued through high school and university. When the opportunity arose to take a staff position to oversee the hospital venues, she was a perfect fit.

"I used to want to be a doctor because I thought it was the best way to help people," says Gabi. Her father is a doctor, and his side of the family are all doctors. "Through my university studies, I discovered there are myriad ways to help people – and the route I chose is through volunteering and supporting volunteers at the KGH Foundation."

"I started as a volunteer and became a volunteer trainer as I gained experience and knowledge," explains Gabi.

"Now I've transitioned into a staff role. I am grateful to support volunteers who just want to make a difference. People are my jam," says Gabi. "I guess you could say I have the gift of 'the Gab' she adds with a wink.

Gabi's counterpart, Max Galloway, also oversees the hospital venues. "We really rely on them, and they always come through," says Max. "Every single volunteer, with every single hour they give to us, with every single smile, plays a fundamental role in helping achieve the organization's overall goals."

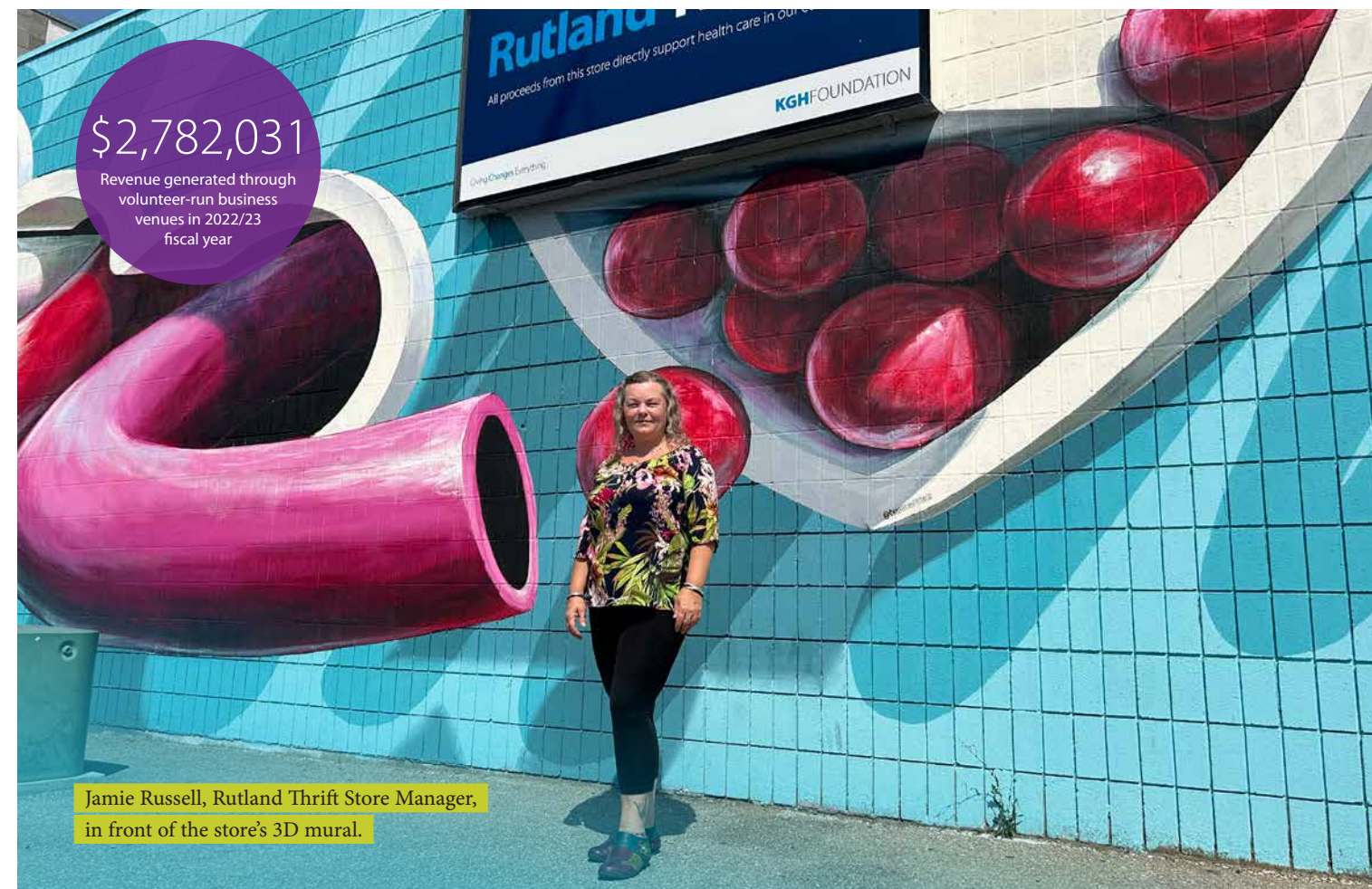
Max is originally from Vancouver Island. He has worked in the hospitality, food and beverage industries for years. Eight years ago, it was an opportunity to work at the Eldorado that moved him and his wife to Kelowna. There, Max became involved in the Eldorado's legendary Annual Innkeeper's Gala (see story on p.10) to raise funds in support of the KGH Foundation, and he felt the quiet calling to perhaps a greater purpose.

"After juggling a few roles during the pandemic, I was looking for a 'pivot,'" says Max. "The opportunity with the KGH Foundation's business venues seemed like a good fit; a place where I could use my experience to have a positive impact on the community."

Jamie Russell also started as a volunteer in the Perking Lot. Now, her big smile is often the first thing people see when walking into Rutland Thrift. For the last seven years, she has managed the store. "I love our volunteers," she says. "I am constantly amazed by their dedication and passion. The store literally would not run without them."

When asked about how she feels about her volunteers, many of whom are in their golden years, she says, "They are so fun, and they do such amazing work in the store. Truly, they are my heart, they are my pride, and it brings me so much joy to work with them," says Jamie.

"No matter what area you choose to volunteer with, volunteering with the KGH Foundation provides an opportunity to pass on kindness to others while making a difference in local health care," says Gabi. "You give and you receive. You give little parts of yourself away and you receive parts of others. It's a beautiful thing."



## YOUR SUPPORT

# ENDOWMENT FUNDS

The following endowments have been established to provide an annual distribution to an area of care that is most meaningful for those who created it.

550 Guru Nanak Endowment  
Adolescent Psychiatry Endowment  
Blenk Family Endowment  
Cancer Care Endowment  
Children's Health Endowment  
Christine C. Lefavre Innovation Endowment  
Cochran Family Endowment  
Colin and Susan Ives Endowment  
Cottonwoods Extended Care Endowment  
Critical Care Endowment  
Dean and Mary Miller Endowment  
Denis and Dorene Shepherd Endowment  
Dr. James Hector Moir and Family Endowment

Dr. Walter Anderson Memorial Endowment  
Eric Heck Endowment  
Farrar Family Endowment  
General Endowment  
George and Dora Rozier Endowment  
Giuseppe (Joe) and Maria Bianca Iafrancesco Endowment  
Gregory Bennett Endowment  
Inge and Walter Niereisel Endowment  
James and Anna Stuart Endowment  
Jessica and Peter Blyth Endowment  
Jim and Isabella Linda Endowment  
Johanna and Eugen Helm Endowment  
John and Monica Shantz Endowment  
Kelowna Kiwanis Legacy Endowment

KGH Auxiliary Endowment  
KGH Doctors Memorial Endowment  
Mark and Anida Johnson Endowment  
Marty and Maureen Pope Eye Care Endowment in Honour of Dr. Malvinder Hoonjan  
Mary and Joseph Degrazio Endowment  
Mary Gouchee Endowment  
Mazzoli Family Memorial Endowment  
Ogden Endowment  
Patient Emergency Support and Comfort Endowment (AKA The ANGEL Fund)  
Patricia Maxine Lorraine Melley-Coolahan Endowment  
Payton + Dillon Budd Brain Health Medical Fund

Premachuk Family Endowment  
Ross Gorman Endowment  
Rutland Hospital Auxiliary Endowment  
Sean Almond and Family Memorial Endowment  
Walley and Marietta Lightbody Endowment

## YOUR SUPPORT

# ESTATE GIVING

The KGH Foundation is honoured to have received gifts from the estates of the following individuals in 2022/23.

Estate of Katri Arola  
Anonymous  
Estate of Isobel Clarke  
Estate of Dorothy Corlette  
Estate of Allan and Elsie Farrar  
Estate of Anne Fischer  
Estate of Nancy Green  
Estate of Norma Jensen  
Estate of Sonja and Walter Kischel  
Estate of Michael McGowan

Estate of Kathleen McLeod  
Estate of Petra Nicu  
Estate of Helene Schock  
Estate of Ruth Sheppard  
Estate of Matthew Swan  
Estate of Gerda Tietz  
Estate of Josephine Vint  
Estate of Milton Young

In addition to \$14.6 million in annual revenues, the KGH Foundation has also received approximately \$2.84 million in estate gift confirmations this year.

## YOUR SUPPORT

# LEGACY GIVING

The following donors have confirmed a deferred gift and are recognized with an engraved leaf on the KGH Foundation's Legacy Tree.

David and Deborah Adel  
Catherine and Gord Almond  
Fritz and Rose Altmann  
Anonymous  
Kerry and Eleeta Armit  
Helen Arneson  
Theresa Arsenault and Stuart Marshall  
Odette Banerji  
Peter Benmore  
Lynda Berchtold  
William and Hazel Boone  
Joan Bousquet  
Carole and Peter Bowen  
Doyle and Susan Bray  
Roger and Donna Brett  
Bernice Brodie  
Beverly Jean Busch  
Maria and John Byland  
André Cabuche  
Grace and Ken Campbell  
Hazel and Ian Campbell  
Aurele and Louise Campeau  
Audrey Carter  
Elizabeth-Ann Catcher  
Nancy Philip-Chan and Victor Chan  
Jayden William Clarke  
Theresa L. Cole  
Bill and Charlene Corbett  
Jim Davies  
Alan and Margaret Dawson  
Alan and Margaret Dawson  
George and Frauke Delisle  
Jessica Dichow and Tyrel Hansen  
Linda Dunlop and David Dombowsky  
Rick Dyer  
Ken and June Elkerton  
Bob and Sherry Elliott  
David and Celeste Fabris  
Herb and Dawn Fallow  
George and Jeanette Fish  
Bob and Darlene Fisher  
Randy and Enid Fleischhacker  
Ute and Ekhard Freitag  
Gerald and Kay Geen  
Jacqueline Gilbertson  
Shirley Golinski  
Don and Patricia Gowing  
Sherry and Dave Green  
Rendina Hamilton  
Jean Harrod  
George and Trudy Heiss  
Eugen and Johanna Helm  
Len and Ethelwyn Hintz  
Chris Holtom  
Gordon Hudson  
James and Linda Hutchinson  
Hannelore Ingelevics  
Colin and Susan Ives  
Bruce and Jacqueline Jones  
Randy and Janet Jones

Lori Kavanagh  
E. Marie Knight  
Verna Knoernschild  
Dennis Krause  
George and Cornelia Kroker  
George and Cornelia Kroker  
Robert and Evelyn Krushe  
Pierre Lalonde and Maureen Barnes  
Dennis and Linda Langevin  
Roy and Lois Lashmar  
Chris Lefavre  
Walley and Marietta Lightbody  
Reid Liske  
Barbara Liversidge  
Sonny (Vic) and Michele Lockhart  
Stephen Lukas and Peter Mallette  
Alex Lye and Chi-Fui Chong  
Sean and Brenda Madigan  
Clare and Jack Mallow  
Jack May and Penni Botham-May  
Ian and Margaret McGown  
Bill and Gail McKerlich  
Hugh and Linda Mervyn  
Dorothy, Jim and Karina (Munroe) Mills  
Roy and Pamela Moor  
Sarah Nelems  
Diane Paterson  
Steven Pavelich  
Tammie Penty  
Anna and John Pineault  
B. Gail Plecash  
Blanche and Hank Polowick  
Darrell and Margaret Porubane  
Albert and Rose Rampone  
Susan and Frazer Reid  
Robert and Irma Reid  
Paul Richards  
Traude Robertson  
Elwin (Woody) and Carol Robinson  
Margaret Ruf  
Marilyn and Tosh Sakakibara  
Art and Kathleen Sakamoto  
Barbara E. Sekela  
Annette Shackleton  
John and Monica Shantz  
Margaret Skitcko  
Diane Smith  
Barbara Spencer  
Monica Standell and Reo Audette  
Joseph and Greta Steele  
Grant Steven and Andrea Loudoun-Steven  
Thomas Steven and Florence E. Steven  
John and Pamela Stevens  
Ruth and Peter Stirling  
Gil and Olga Strauss  
Jim and Anna Stuart  
Anne Stuart  
Don and Dorothy Sugimoto  
Per Kjell Sundin Foundation  
Sally Swenson

Bob and Stella Tessier  
Dorothy Thomson  
Tim and Sandra Tombe  
Lori J. Uzelman  
Grace Wainwright  
Gaille C. Wallach  
Andrea and John Wallin  
Charles Volkart  
David and Priscilla Weir  
Les and Santhey Yeager

Gordon and Barbara Zapf  
Seymour and Joan Zidle

The KGH Foundation gratefully acknowledges the 136 donors who wish to remain anonymous.



2022 / 2023

# FINANCIAL INFORMATION



- Donations **\$8,098,823**
- Business Enterprises **\$2,782,031**
- Gaming, Sponsorships & Other **\$3,019,120**
- Investment Income **\$595,526**
- JoeAnna's House Operations **\$127,127**
- Canadian Emergency Wage Subsidy **\$13,163**



- Donation Disbursements **\$6,941,771**
- Amortization, Administration, Salary & Benefits **\$3,480,045**
- Business Enterprises **\$1,976,150**
- Lake Life Lottery **\$1,802,603**
- JoeAnna's House Operations **\$739,552**



- Restricted for Endowment Purposes **\$20,561,931**
- Restricted for Specific Purposes **\$20,408,970**
- Unrestricted **\$ 5,364,220**
- Invested in Capital Assets **\$4,846,797**

At the KGH Foundation, we take great care with your gifts. The Foundation participates in an international benchmarking program to ensure our standards for achievement are measured according to the highest industry standards.

Our current Return on Investment (an indicator of "Fundraising Efficiency" – representing the return on each dollar spent) is \$4.85. Our Cost to Raise a Dollar, the benchmarking program's indicator of "Fundraising Effectiveness", is \$0.21.

\*\* AHP (Association of Healthcare Philanthropy) Canadian Median for Fundraising Efficiency (where a higher number is better) is \$4.35.  
 \*\*\* AHP Canadian Median for Fundraising Effectiveness (where a lower number is better) is \$0.23.

2022 / 2023

# BOARD OF DIRECTORS

**Allyssa Costerton-Grant**

Associate Director, Industry Relations and Alumni Development, UBC

**Jaymi Chernoff**

Executive Director, Clinical Services, Kelowna General Hospital

**Wendy Creelman**

Kelowna-Lake Country Returning Officer, Elections Canada

**David Cronquist**

Retired Sr. Vice President, Interior Savings Credit Union

**Manik Dhir**

Entrepreneur, Managing Director, Epitome Holdings Inc.

**Nick Egarhos**

Co-Founder, Persona Informatics

**Roberta Fidalgo**

Founder, YET/HR Consulting and Coaching

**Dr. Ryan Foster**

Critical Care and Trauma, Kelowna General Hospital  
 Medical Director, Interior Health Critical Care Network

**Shauna George**

Investment Counsellor, RBC Phillips Hager & North Investment Counsel

**Dr. Jeremy Harris\***

Division Head, Vascular Surgery / Chief of Staff, Kelowna General Hospital

**Glen Jackson**

Senior Manager, Transition Smart Specialist MNP

**Janine Karlsen**

Owner/Managing Director, Home Instead Central Okanagan

**Ria Kitsch**

Co-Founder, Kitsch Wines

**Christy Lovig**

Lawyer & Partner, Doak Shirreff Lawyers LLP

**Patrick Ng**

Investment Advisor, NG Wealth Management  
 RBC Dominion Securities

**Darrell Porubanec,**

Retired Investment Advisor

**Greg Pratch**

Lawyer, JV Driver Group

**Kyle Recsky,**

Portfolio Manager, Odlum Brown Limited

**John Tavolieri**

Principal, FCM, LLC

**Steven Tuck**

Retired Newspaper Publisher/Owner

**Dr. Cara Wall\***

Hospitalist, Chief of Staff, Site Medical Director, Kelowna General Hospital

**Trina Warren**

Regional Managing Partner, Thompson-Okanagan MNP

\* A changeover of Chief of Staff at KGH took place in October 2022.

FEATURED 2022 / 2023

# PROJECT GRANT HIGHLIGHTS

## KIWANIS LEGACY FUND

The Kiwanis Legacy Fund was established in 2017 to support the health and wellness of children and youth in the Central Okanagan. In the 2022-23 fiscal year, the Kiwanis Legacy Fund granted nearly \$550,000 to community organizations that support the health and well-being of youth and children. Some of those grants include:

### Strathcona Beach Park

Strathcona Beach Park is often bustling with activity. In 2022, The City of Kelowna received a \$150,000 grant to support Phase 1 of the Strathcona Beach Park redevelopment plan. Located steps away from Kelowna General Hospital (KGH) and JoeAnna's House, the funding supported a new structural play area with components that are accessible, inclusive and provide play opportunities for all ages and abilities.

The city's overall vision for the park is progressive and welcoming; and with community support, that vision is becoming a reality.

### 'PICNIC'

Food connects and builds community and supports increased social capital. For students, food is a key component of wellbeing and supports physical, mental, social, and academic health.

A community food hub is a network of places and people providing food and nutrition programs, services, projects, and initiatives to support student wellbeing. Students at UBC Okanagan, as well as staff and faculty, indicated that establishing a food hub on campus was a priority.

The KGH Foundation Kiwanis Legacy Fund supported the creation of an on-campus food hub named PICNIC with a \$55,000 grant to fund the necessary equipment, supplies and partial funds to support the staffing positions needed to facilitate programming.

Students will host food skills workshops, cook community meals, pilot a breakfast program, and contribute to more food programming to support student well-being.

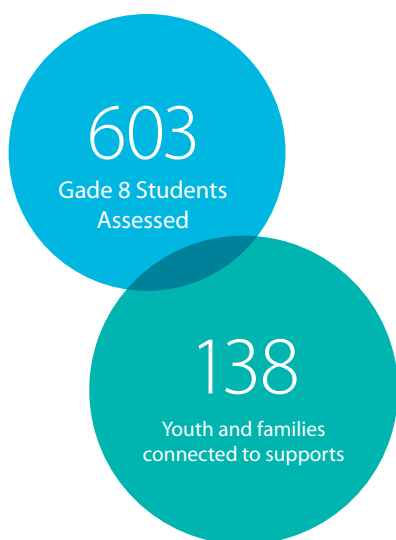
### Upstream Kelowna

Upstream Kelowna (an adaptation of Upstream Canada) is a prevention and early intervention model, aimed at ending school disengagement and youth homelessness. They are a community collaborative that provides supports for young people and families through coordinated and early access to services in schools. Upstream services seek to enhance protective factors by providing place-based access to resources, well-being, health, and resiliency before potential barriers increase and lead to crisis.

Youth with lived experience across Canada, and locally, stated that school-based early intervention – a safe adult reaching out with support and resources – could have prevented them from experiencing crisis, trauma, homelessness, and school disengagement.

The Kiwanis Legacy Fund awarded a \$75,000 grant to support this meaningful preventative work which helped to achieve the following:

- 603 Grade 8 students were assessed
- 138 youth and families were connected to supports



Celebrating the opening of the new play structure at Strathcona BeachPark.  
 Front (L to R): Kiwanis Legacy Fund Committee Members Tom Cockrell and Wendy Falkowski;  
 Middle (L to R): Darlene Haslock, Director, JoeAnna's House, Allison Young, CEO, KGH Foundation,  
 Melina Moran, Director of Grants, KGH Foundation;  
 Back (L to R): City of Kelowna Councillor Loyal Wooldridge,  
 Mayor Tom Dyas, Councillor Ron Cannan and Councillor Luke Stack.

## EXTERNAL GRANT

### Supporting Blood Transport Services

In 2022, BC Emergency Health Services (BCEHS) launched a new blood transport program with Station 370 (air ambulance) which serves the BC Interior through collaboration with Interior Health, Royal Inland Hospital (RIH) Foundation and Kelowna General Hospital (KGH) Foundation.

The new program gives paramedics the opportunity to improve pre-hospital emergency care and administer life-saving blood transfusions while they are transporting patients via helicopter to RIH or KGH. Having blood readily available on board also allows BCEHS to deliver more equitable care to rural, remote and Indigenous communities. Prior to this program launch, pre-hospital blood was only available on air ambulances based out of Vancouver and Parksville.



Donation Disbursements	
Donation Disbursements	\$6,941,771
Amortization, Administration, Salary & Benefits	\$3,480,045
Business Enterprises	\$1,976,150
Lake Life Lottery	\$1,802,603
JoeAnna's House Operations	\$739,552
<b>TOTAL \$6,941,771</b>	

## KGHFUNDATION

2268 Pandosy Street P. 250.862.4438  
Kelowna, BC V1Y 1T2 W. [kghfoundation.com](http://kghfoundation.com)

**Privacy Policy:** Protecting your privacy is important to us! The KGH Foundation complies with all applicable federal and provincial statutes regarding your personal information. Any collection, use, disclosure and retention of your personal information is subject to consent. Our privacy practices are designed to achieve this. The KGH Foundation will never sell, rent or share your personal information to outside organizations or individuals. Any and all information of a personal nature about our donors always remains confidential. We also strive to keep your personal information as accurate and up-to-date as is necessary for the purposes for which it is to be used. From time to time the KGH Foundation may use outside contractors to assist with the operational activities of the KGH Foundation. Contractors are bound by contract to adhere to the KGH Foundation's privacy policies and procedures.